



Naomi & Nicole[®]

2026
INTERNATIONAL



LIGHT SHAPING

Comfortably smooths your curves and is so lightweight, you won't even know you're wearing it!

7534P-1
2-PACK LIGHT SHAPING BRIEF
S-2XL
Warm Beige/
Warm Beige,
Black/Warm
Beige

Tummy Control



Tummy panel provides extra control for everyday wear.
No-sew bonded waistband lies flat against the skin for no pinching, poking, or rolling.
WONDERFUL EDGE® ensures no lines and no ride-up.

No Lines • No Ride
WONDERFUL
edge®

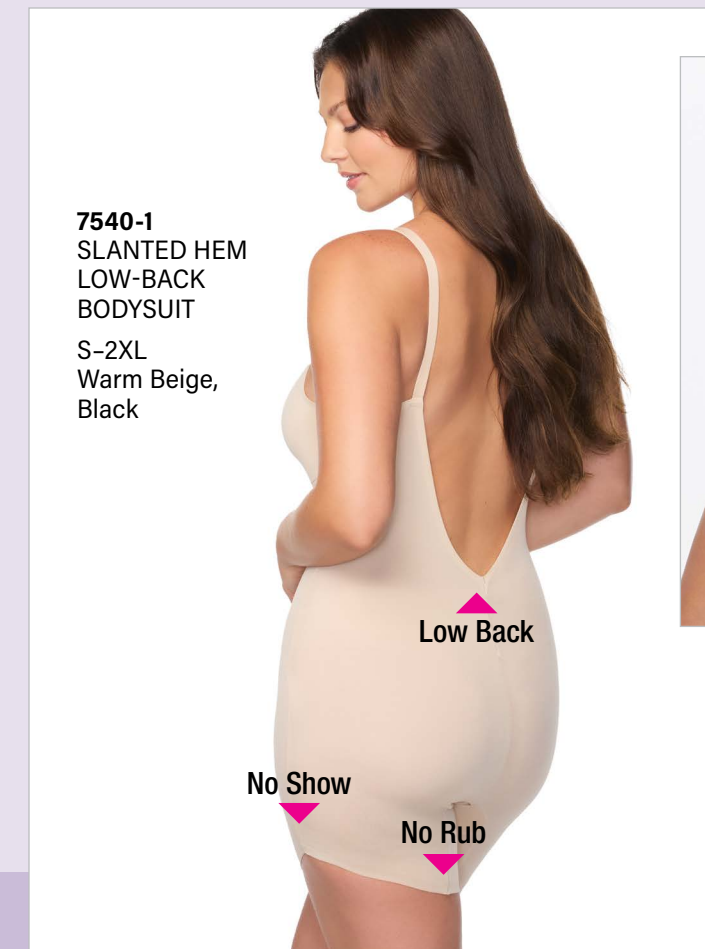
Every outfit needs a... SIDEKICK No Rub, No Show

NO RUB:
Longer inseam prevents chafing and won't rub you the wrong way!

NO SHOW:
The unique angled outer hem won't show under skirts and dresses.

WONDERFUL EDGE®
on the inner thigh stays put!

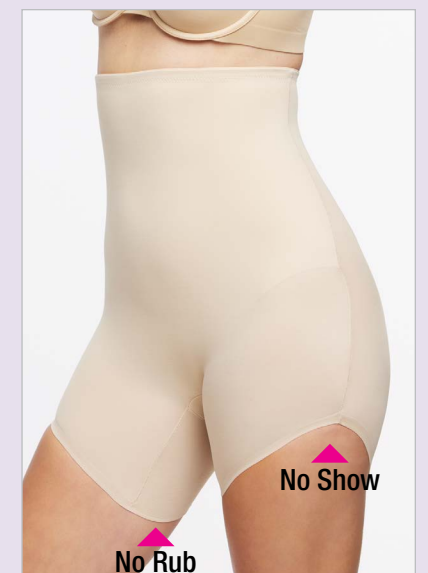
No Lines • No Ride
WONDERFUL
edge®



7540-1
SLANTED HEM
LOW-BACK
BODYSUIT
S-2XL
Warm Beige,
Black



7546-1
SLANTED HEM
SHAPING SHORT
S-2XL
Warm Beige, Black



7548-1
HIGH-WAIST SLANTED
HEM SHAPING SHORT
S-2XL
Warm Beige, Black

NO SIDE SHOW™

Smooths Underarm Bulge

Strategically-placed upper side panels will shape and flatten under your arms, while single-ply body fabric will comfortably smooth your back.

Double shaping panels placed across the front, at the waist, and under the arms will provide extra control and shaping, while keeping you smooth and comfortable all day.



7503-1
WAIST SHAPING TANK
M-3XL
Black, White

7512-1
LOUNGE BRA
Comfort Tech Band
S-2XL
Warm Beige, Black

No Lines • No Ride
WONDERFUL
edge®

Comfort
TECH BAND
no digging, no rolling
no kidding!



7512-1

adjusts
TO
YOU



7454-1
SHAPING BRIEF
S-2XL
Warm Beige, Black

7458-1
MID-THIGH SHAPING SHORT
S-2XL
Warm Beige, Black



Control panel smooths the tummy, while the mesh insert at the back waistband adds gentle give for a fit that doesn't dig, pinch, or roll.

Adapts to your body's natural changes for a flexible, comfortable fit that always feels right.

WONDERFUL EDGE® ensures no lines and no ride-up.

*no dig,
pinch,
or roll*
WAISTBAND

Luxe
SHAPING with
BACK MAGIC®



7085-1



7085-1

No Lines • No Ride
WONDERFUL
edge®

7085-1
HIGH-WAIST
SHAPING BRIEF
S-4XL
Warm Beige,
Black

7089-1
HIGH-WAIST
THIGH SLIMMER
S-4XL
Warm Beige,
Black



7089-1

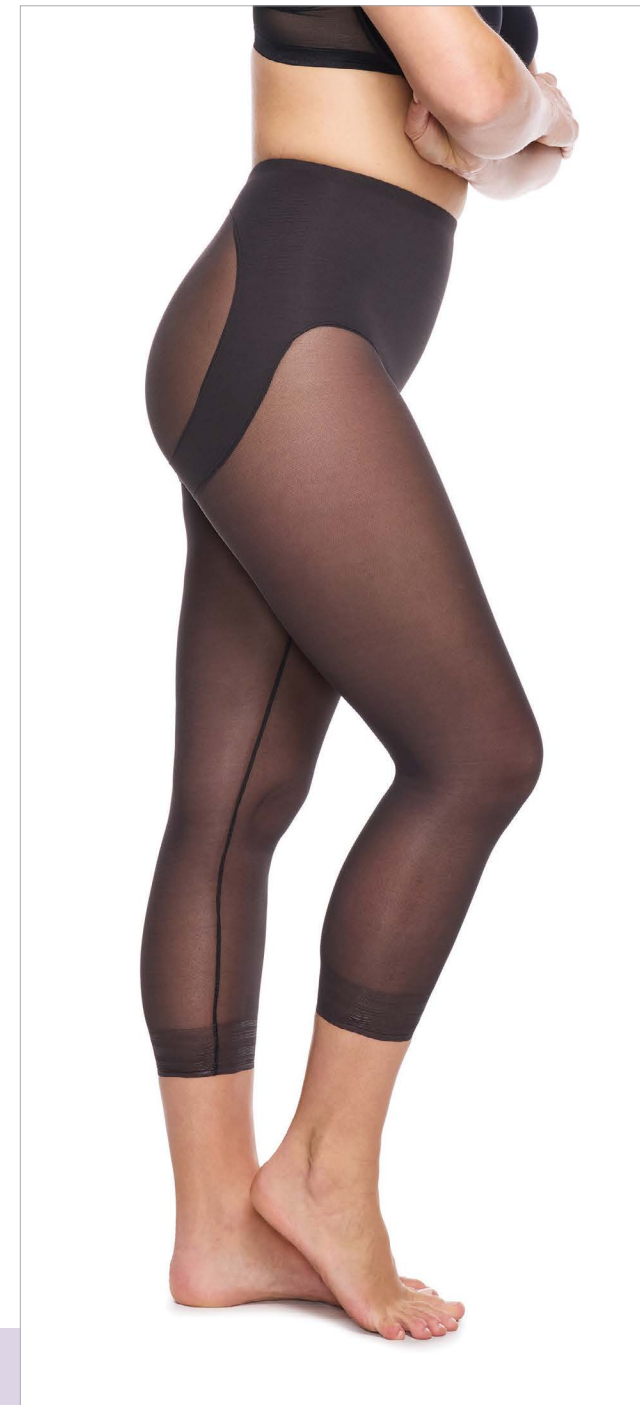


7089-1

**BACK
MAGIC®**

Our innovative, patented feature provides more waist shaping and amazing comfort. The flexible stays comfortably shape away muffin top.

SHEER
Rear **LIFTING**



747-1
SHEER
SHAPING
LEGGING
S-3XL
Warm Beige,
Black

No Lines • No Ride
WONDERFUL
edge®



Unbelievable COMFORT[®]

PLUS SIZE 1X-5X

7776-1
OPEN-BUST
THIGH
SLIMMER
BODYSUIT
1X-5X
Warm Beige,
Black



7071-1
OPEN-BUST
THIGH
SLIMMER
BODYSUIT
S-3XL
Warm Beige,
Black

771-1
OPEN-BUST
SHAPING
TANK
S-2XL
Warm Beige,
Black

775-1
HIGH WAIST
SHAPING
BRIEF
S-3XL
Warm Beige,
Black

779-1
HIGH WAIST
THIGH
SLIMMER
S-3XL
Warm Beige,
Black

This single-ply, lightweight fabric is designed for all-day wear.

Crafted from comfortable high-modulus Tactel[®] fabric, this shapewear features smooth construction that flatters your wardrobe.

No Lines • No Ride
WONDERFUL
edge[®]

7784-1
SHAPING
BRIEF
1X-5X
Warm Beige,
Black



7786-1
THIGH
SLIMMER
1X-5X
Warm Beige,
Black

7770-1
OPEN-BUST
SHAPING TANK
1X-4X
Warm Beige,
Black



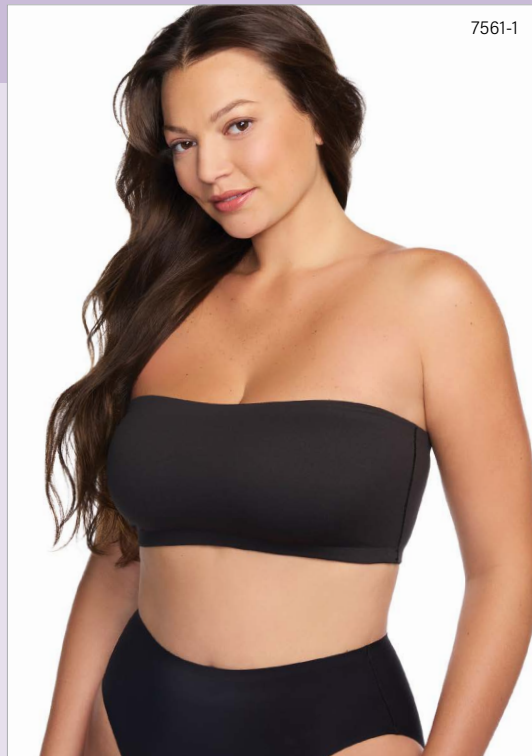
7775-1
HIGH-WAIST
SHAPING BRIEF
1X-5X
Warm Beige,
Black

7779-1
HIGH-WAIST
THIGH SLIMMER
1X-5X
Warm Beige,
Black



No Lines • No Ride
WONDERFUL
edge[®]

REAL SMOOTH®



7561-1
STRAPLESS
BANDEAU
S-XL
Stucco, Black

Crafted from soft, stretchable material, this bralette provides unmatched comfort and flexibility, keeping you cool and confident.



NO SHOW, NO LINES

REGULAR



A213-1 Hipster
S-XL



A214-1 High-Cut
M-2XL

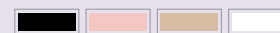


A215-1 Brief
M-2XL



A216-1 Boyshort
S-XL

Colors: Black, Veiled Rose, Warm Beige, White*



*White - only available in A214-1 & A215-1

PLUS

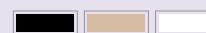


A814-1 Plus High-Cut
1X-4X



A815-1 Plus Brief
1X-4X

Colors: Black, Warm Beige, White



All panty styles feature super comfortable fabric with **WONDERFUL EDGE®** for NO LINES and NO RIDE-UP.

No Lines • No Ride
WONDERFUL
edge®



A213-1



318 North 29th Street
Blackwell, OK 74631

Phone: 580.363.1935

Orders: CustomerOrders@cshape.com

www.NaomiandNicole.com

©Cupid Intimates