



INTERNATIONAL
2026

[®]
CUPRID
FINE SHAPEWEAR

Cupid®Fine Shapewear offers sleek, smooth elegance and a range of control to suit all body types and needs. All products are hand-made under rigorous quality standards and elevated to ensure they meet specific performance benchmarks before ever leaving the factory. Additionally, all products come with a 100% replacement guarantee.

LIGHT CONTROL	Gentle smoothing for everyday comfort.
MODERATE CONTROL	Targeted shaping for a sleek look.
FIRM CONTROL	Strong support for defined curves.
EXTRA FIRM CONTROL	Maximum control for dramatic contouring.

What size should I buy?

Measurements noted below are in inches

size:	S	M	L	XL	2XL
bra:	32	34	36	38	40
waist:	25-27	28-30	31-33	34-36	37-39
hips:	35-37	38-40	41-43	44-46	47-49
dress:	4/6	8/10	12/14	16/18	18/20

size:	1X	2X	3X	4X
bra:	40	42	44	46
waist:	40-42	44-46	48-50	52-54
hips:	48-50	52-54	56-58	60-62
dress:	18/20	22/24	26/28	30/32

Plus Styles 2005-E & 2009-E

		36	38	40	42	44	46
NORMAL CUP SIZE	C	36	38	40	42	44	46
	D	36	38	40	42	44	46
	DD	38	40	42	44	46	48
	DDD	38	40	42	44	46	48
	G	40	42	44	46	48	48

All Cupid®Fine garments feature:

- **LIGHT, MODERATE, FIRM, or EXTRA FIRM** control
- Super stretchy, thin fabrics for extraordinary comfort and maximum ease in sliding garments on and off
- Invisible seams for a tailored appearance
- **WONDERFUL EDGE®** for no lines, no ride
- Superior design provides **NO** midriff roll-down

CUPID®
FINE SHAPEWEAR

318 North 29th Street
Blackwell, OK 74631
580.363.1935
Email: tc@cshape.com
www.TCFineIntimates.com



sleek
essentials

Limited seam design for smoothing under fitted outfits

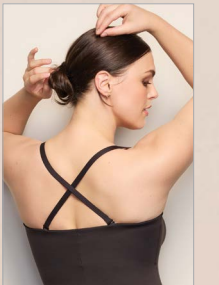
Designed to be your everyday sleek essential

Our innovative **COMFORT TECH BAND** lies flat without lines, flattens the tummy, and won't dig or roll.



2737-E
STRAPLESS
SHAPING SLIP
S-2XL
Black,
Warm Beige

5-way convertible straps



2733-E
MID-THIGH
SHAPING
BOYSHORT
S-2XL
Black,
Warm Beige



2735-E
HIGH-WAIST
SHAPING
BRIEF
S-2XL
Black,
Warm Beige



2738-E
HIGH-WAIST
SHAPING
BOYSHORT
S-2XL
Warm Beige

dress rehearsal

Low-back silhouettes align with the latest low-cut necklines and open-back styles. Strut your stuff in confidence with firm support and tummy control.



2161-E



2161-E

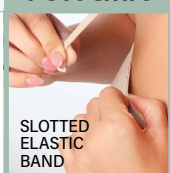


2168-E



2167-E

Versatile



SLOTTED ELASTIC BAND

2167-E
STRAPLESS
MID-THIGH
BODYSUIT
S-2XL
Black, Warm Beige

Slotted elastic band for endless strap options

2161-E
LOW-BACK
MID-THIGH
SHAPING
BODYSUIT
S-2XL
Warm Beige

Front convertible straps

2168-E
LOW-BACK
MID-THIGH
SHAPING SHORT
S-2XL
Warm Beige

No Lines • No Ride

WONDERFUL
edge®

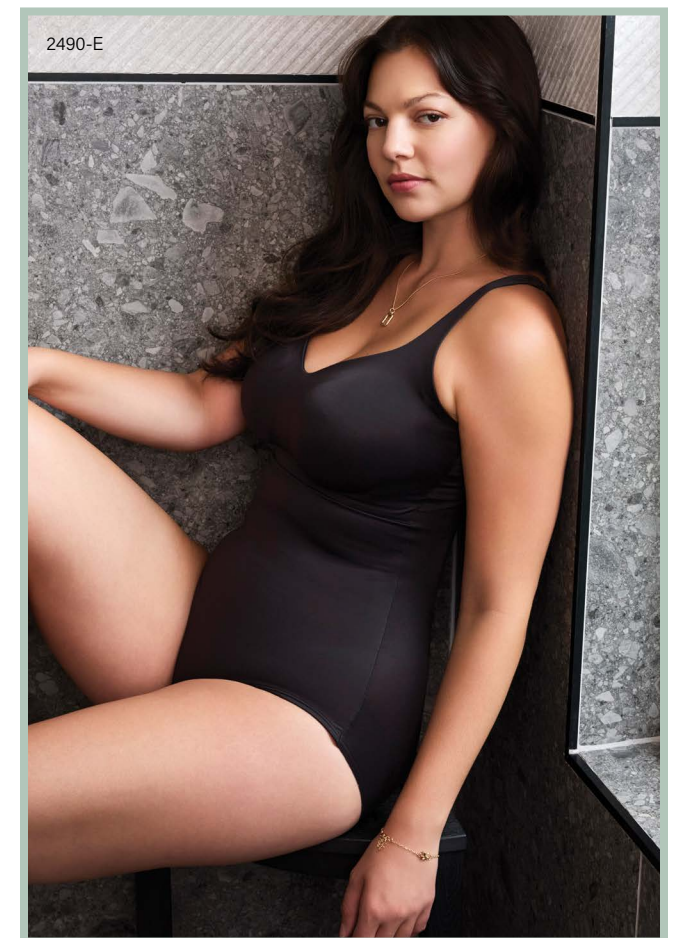


WONDERFUL u®

"Fits You" Design

How does it work?

The underwires are anchored to a stretch band beneath the bra cups. The usually rigid center front of the bra is now constructed with a flexible material. These two 'flex elements' allow the underwires to float and adapt to your movement, providing exceptional comfort and support.



2490-E

2490-E
SHAPING
BODYSUIT

34-36B, 34-38C,
34-38D, DD, DDD & G
Black, Warm Beige

No Lines • No Ride

WONDERFUL
edge®



adJUST Perfect[®]

Life Happens...
Bodies Change

These styles are designed to adjust up or down in size while maintaining the same control.

2174-E
SHAPING BRIEF

S-2XL
Black,
Warm Beige

2176-E
SHAPING
BOYSHORT

S-2XL
Black,
Warm Beige

No Lines • No Ride
WONDERFUL
edge[®]



2176-E

2174-E

NO SIDE SHOW

NO COMPRESSION
ON THE BUST FOR A
MORE NATURAL LOOK

SMOOTHS UNDERARM
BULGE

Two-ply panels flatten
your tummy and
smooth your back

WONDERFUL EDGE[®]
for no lines, no ride

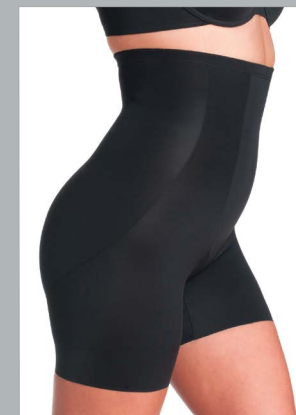


2190-E



2191-E

PLUS SIZE



2005-E
HIGH-WAIST
SHAPING BRIEF
1X-4X
Black, Warm Beige

2009-E
HIGH-WAIST
THIGH SLIMMER
1X-4X
Black, Warm Beige



2190-E
SHAPING
BODYSUIT
S-2XL
Black, Warm Beige

2191-E
SHAPING CAMI
S-2XL
Black, Warm Beige

No Lines • No Ride
WONDERFUL
edge[®]

iconic core®

2951-E
MID-THIGH
SHAPING
BODYSUIT
M-2XL
Black, Stucco

2953-E
OPEN-BUST
CAMISOLE
S-2XL
Black, Stucco

2954-E
WAIST
CINCHER
S-2XL
Black, Stucco

2955-E
HIGH-WAIST
SHAPING
BRIEF
S-2XL
Black, Stucco

2958-E
MID-THIGH
SHAPING
SHORT
M-2XL
Black, Stucco

2959-E
HIGH-WAIST
THIGH
SLIMMER
M-2XL
Black, Stucco



**Comfort
TECH BAND**
no digging, no rolling
no kidding!

No Lines • No Ride
**WONDERFUL
edge**

LYCRA FitSense®
print technology
is a registered
trademark of The
LYCRA Company.

2959-E



2955-E



2959-E



2953-E



2954-E

Targeted
LYCRA FitSense®
print technology slims your
tummy, smooths your hips,
and lifts your bum.



2951-E



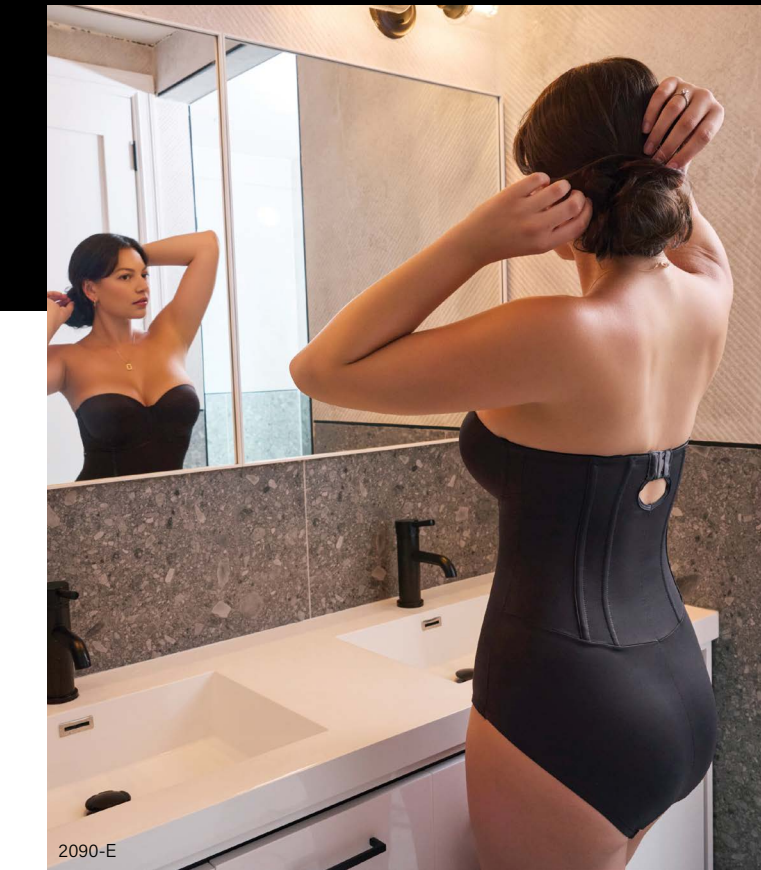
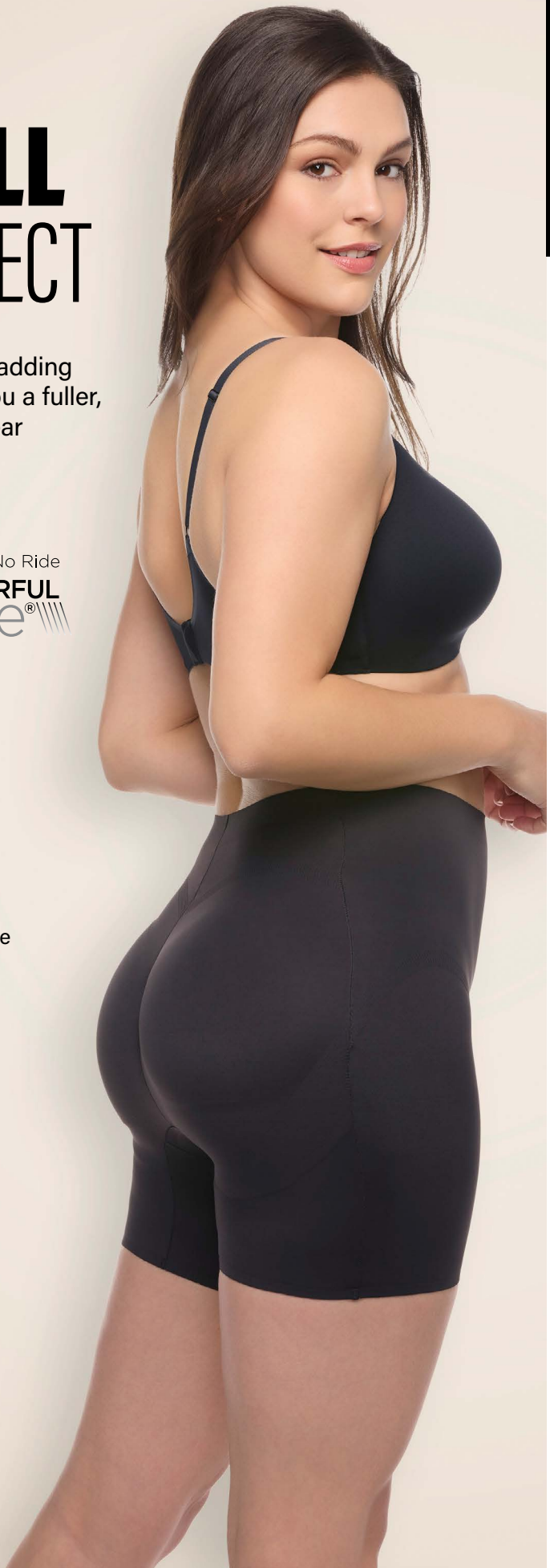
2958-E

FULL EFFECT

Built-in padding to give you a fuller, curvier rear

No Lines • No Ride
WONDERFUL edge

2848-E
PADDED SHORT
S-2XL
Black,
Warm Beige



2090-E

2090-E
STRAPLESS SHAPING BODYSUIT
34-36B, 34-38C,
34-38D, DD
Black,
Warm Beige

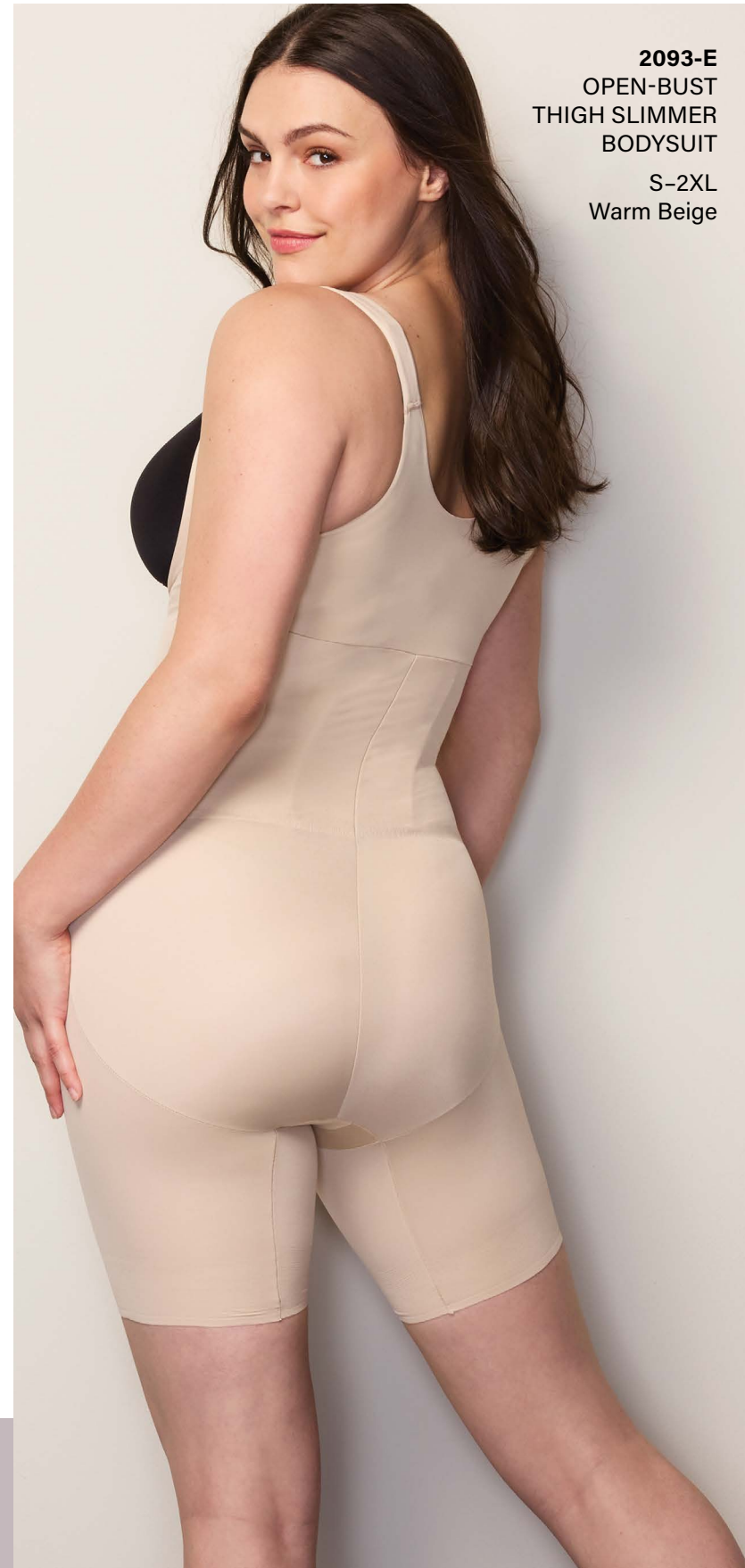
2078-E
WAIST CINCHER
S-2XL
Warm Beige



2078-E

SHAPE AWAY®

2093-E
OPEN-BUST THIGH SLIMMER BODYSUIT
S-2XL
Warm Beige



2099-E



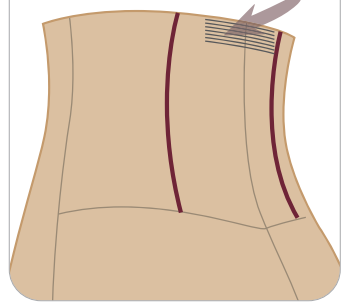
2091-E

BACK MAGIC®

FLEXIBLE STAYS

provide back support & comfortably shape away muffin top

"NO SLIP" feature inside!



2091-E
OPEN-BUST SHAPING BODYSUIT
S-2XL
Black,
Warm Beige

2095-E
HIGH-WAIST SHAPING BRIEF
S-2XL
Black,
Warm Beige

2099-E
HIGH-WAIST THIGH SLIMMER
S-2XL
Black,
Warm Beige



2095-E

No Lines • No Ride
WONDERFUL edge

CUPID[®]
FINE SHAPEWEAR

318 North 29th Street
Blackwell, OK 74631

Phone: 580.363.1935

Ordering: CustomerOrders@cshape.com