

Curvy Kate®

D-K cup



JULY - DECEMBER
2025

OUR PURPOSE

To give **comfort, confidence and freedom** to everybody with bigger boobs.

Curvy Kate[®]
D-K cup



BOOST DIAMANTE

D-J cups



WORN TO BE SEEN



Elevate your lingerie game with Boost Diamanté black. Our bestselling shape, with dazzling diamanté strapping to add a touch of glamour. Perfect for the party season.

KEY FEATURES

- Bestselling shape, fits like **Boost Me Up**.
- Padded balcony bra.
- Smooth cup seams, great for under clothes.
- Sweetheart neckline.
- Fully adjustable diamanté strapping for added glitz.
- Matching tanga brief with diamante side detail.

STYLES

CK103106 - Padded Balcony Bra

	D	DD	E	F	FF	G	GG	H	HH	J
30										
32	•									
34	•	•								
36	•	•	•							
38	•	•	•	•						
40	•	•	•	•	•					
42	•	•	•	•	•	•				
44	•	•	•	•	•	•	•			

CK103211 - Tanga Brief

	S	M	L	XL	2XL
•	•	•	•	•	•

COLOURS

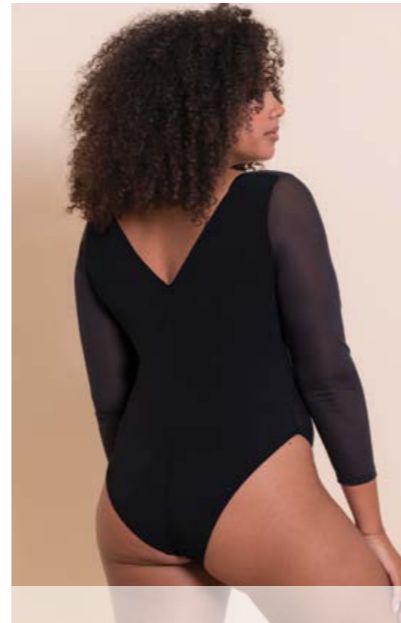
- Black - Available from September 2025 **NEW**

BOOST BODY

D-J cups



WORN TO BE SEEN



Boost your confidence with this sleek and supportive body with our best selling bra shape built in. It's the ultimate style that should be worn to be seen.

KEY FEATURES

- Bestselling shape, fits like **Boost Me Up**.
- Full stretch microfibre body with mesh sleeves and gusset fastening.
- Padded cups give lift.
- Sweetheart neckline.
- Fully adjustable straps.

STYLES

CK095710 - Sleeved Padded Balcony Body

	D	DD	E	F	FF	G	GG	H	HH	J
32										
34	•									
36	•	•								
38	•	•	•							
40	•	•	•	•						
42	•	•	•	•	•					
44	•	•	•	•	•	•				

COLOURS

- Black - Available from September 2025 **NEW**

PUCKER UP

DD-HH cups



Dive into our deep plunge, adorned with playful lips embroidery and a cute lip charm. This set will take you from Christmas to Valentine's Day.

KEY FEATURES

- Deep plunge embroidered style.
- Lips motif scattered over embroidery.
- Lip charm.
- Fully adjustable straps.
- Based on **Voltage shape**.
- Matching brazilian with lip motif detail and lip charm.

STYLES

CK099118 - Deep Plunge

	DD	E	F	FF	G	GG	H	HH
30	•	•	•	•	•	•	•	•
32	•	•	•	•	•	•	•	•
34	•	•	•	•	•	•	•	•
36	•	•	•	•	•	•	•	•
38	•	•	•	•	•	•	•	•

CK099202 - Brazilian Brief

	S	M	L	XL
•	•	•	•	•

COLOURS

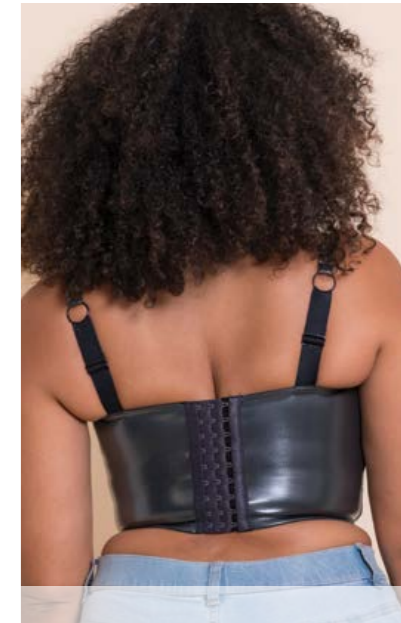
- Lipstick Red - Available from November 2025 **NEW**

HYPE

D-J cups



WORN TO BE SEEN



Turn up the drama with this sleek metallic pleather longline style, featuring an inner balcony bra. Dare to be bold because Hype is made to stand out.

KEY FEATURES

- Pleather fabric wraps around this longline style.
- Metallic finish.
- Designed to be seen.
- Inner balcony bra support offers rounded shape, based on **Cool Cat** block.
- Adjustable straps.
- Stretch body fit.

STYLES

CK101112 - Longline Corset Bra

	D	DD	E	F	FF	G	GG	H	HH	J
30										
32	•									
34	•	•								
36	•	•	•							
38	•	•	•	•						
40	•	•	•	•	•					

COLOURS

- Gunmetal - Available from September 2025 **NEW**



ENCHANT DD-K cups



Elevate your lingerie game with this striking design. Enchant is powerful, polished, and unapologetically chic; this style redefines confidence.

KEY FEATURES

- Matt Pleather fabric adorns cups.
- Cut out linear floral embroidery for graphic effect.
- Side support cup panels for forward projection.
- Fully adjustable straps.
- Matching high waist brief.

STYLES

CK097102 - Side Support Balcony Bra

	DD	E	F	FF	G	GG	H	HH	J	JJ	K
30											
32											
34											
36											
38											
40											
42											
44											
46											

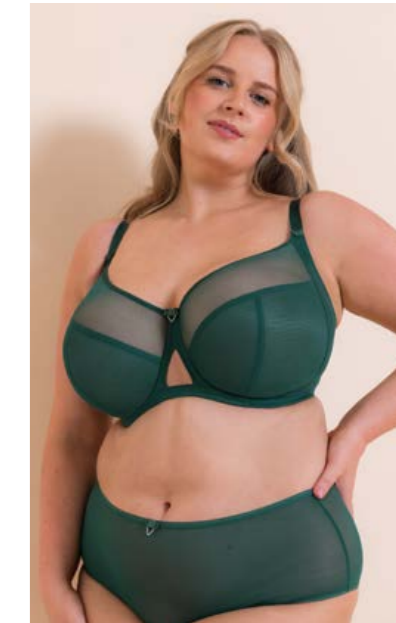
CK097208 - High Waist Brief

	S	M	L	XL	2XL

COLOURS

- Black - Available from August 2025 **NEW**

VICTORY D-J cups



Our award-winning Victory semi-sheer balcony bra combines lightweight minimalist design with impeccable support.

KEY FEATURES

- Non-padded underwired 4-part cup balcony bra shape.
- Tried and tested exceptional fit.
- Side support panels for forward projection.
- Double layered mesh lower cup for increased support.
- Silver 'V' charm detail and cut-out centre front.
- Matching semi-sheer short with high waist.

STYLES

CK9001 - Side Support Balcony Bra

	D	DD	E	F	FF	G	GG	H	HH	J
30										
32										
34										
36										
38										
40										
42										
44										

CK9003 - Short

	8	10	12	14	16	18	20	22

COLOURS

- Forest Green - Available from October 2025 **NEW**
- Black - Continuity
- Latte - Continuity
- White - Continuity*

WONDERFULLY DD-K cups



Discover style and comfort with our bestselling underwired balcony bra. Wonderfully ensures superior fit, support, and all-day confidence.

KEY FEATURES

- Bestselling shape, trusted for its superior fit and comfort.
- Non-padded underwired 4-part cup balcony bra shape.
- Curved underband to reduce roll and discomfort.
- Wide, firm wing mesh smooths and supports.
- Stretch top cup to balance the bust.
- Match with full coverage short with mesh panelling.

STYLES

CK061102 - Full Cup Side Support Balcony Bra

	DD	E	F	FF	G	GG	H	HH	J	JJ	K
32											
34											
36											
38											
40											
42											
44											
46											

COLOURS

- Deep Orchid - Available from July 2025 **NEW**
- Black - Continuity

CK061201 - Short

	10	12	14	16	18	20	22	24

- Latte - Continuity
- White - Continuity*

FLARE DD-J cups



Ignite confidence with this non-padded plunge bra, featuring flame-inspired embroidery, shimmer details, and a racer-back option.

KEY FEATURES

- Non-padded underwired full cup plunge.
- Delicate flame-inspired embroidery with shimmer foil details the top cup.
- Curved underband for comfort and shape.
- Rigid embroidered top cup for secure plunging shape.
- Racer back option with J-hook.
- Power mesh wings for firm support and side support panels for forward shaping.

STYLES

CK087101 - Full Plunge Side Support Bra

	DD	E	F	FF	G	GG	H	HH	J
32									
34									
36									
38									
40									
42									
44									
46									

COLOURS

- Rose Sparkle - Available from December 2025 **NEW**

LOVELACE D-K cups



Experience elegance with Lovelace. Stretch lace and smoothing wings offer superior comfort, support and a round uplifted shape for all day confidence.

KEY FEATURES

- Non-padded underwired side support balcony bra shape.
- Graphic floral and smooth touch stretch lace top cup.
- Smoothing wrap round wing.
- Built-up lace apex panel.
- Round and uplifted shape for all day wear.
- Matching lacey brazilian brief.

STYLES

CK089120 - Side Support Balcony Bra

	D	DD	E	F	FF	G	GG	H	HH	J	JJ	K
30												
32												
34												
36												
38												
40												
42												
44												

COLOURS

- Deep Purple - Available from November 2025 **NEW**
- Black/Taupe - Continuity*
- Latte - Continuity*

CK089202 - Brazilian Brief

	S	M	L	XL	2XL

SMOOTHIE SPACER D-J cups



Redefine comfort with our spacer-moulded plunge bra. Lightweight, breathable cups offer a second skin feel, while seam-free wings ensure no VBL.

KEY FEATURES

- Underwired spacer moulded plunge bra shape.
- Lightweight spacer cup is smooth & light, flexible cup fit.
- Bonded seam free wings for smoothing back (no VBL).
- Racer back option with J-hook.
- Wear with Lovelace deep purple brazilian.

STYLES

CK072104 - Spacer Moulded T-Shirt Bra

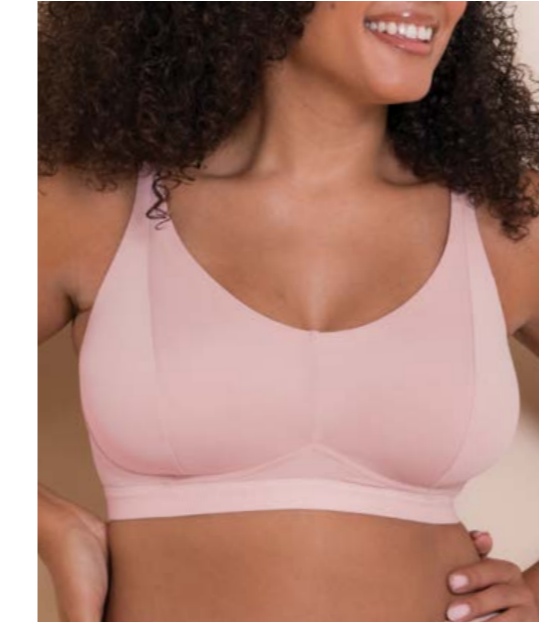
	D	DD	E	F	FF	G	GG	H	HH	J
30										
32										
34										
36										
38										
40										
42										
44										
46										

COLOURS

- Purple - Available from October 2025 **NEW**
- Black - Continuity*
- Latte - Continuity*



ZEN DD-JJ cups



Elevate everyday comfort with our dual cup-sized, stretch-fit bralette. Designed with a monowire illusion, buttery-soft fabric, and a ribbed underband, Zen offers gentle support and a modern, inclusive fit.

KEY FEATURES

- Non-padded, non-wired stretch fit bralette.
- Dual cup sized.
- Monowire illusion cradle with branded logo.
- Buttery-touch style incorporates double layer cups.
- Soft ribbed deep under band elastic for added support & comfort.
- Fully adjustable straps.
- Available with matching dual sized brazilian.

STYLES

CK093110 - Non Wired Bralette

	DD/E	F/FF	G/GG	H/HH	J/JJ
30	•	•	•	•	•
32	•	•	•	•	•
34	•	•	•	•	•
36	•	•	•	•	•
38	•	•	•	•	•
40	•	•	•	•	•

CK093202 - Brazilian Brief

	S/M	L/XL
	•	•

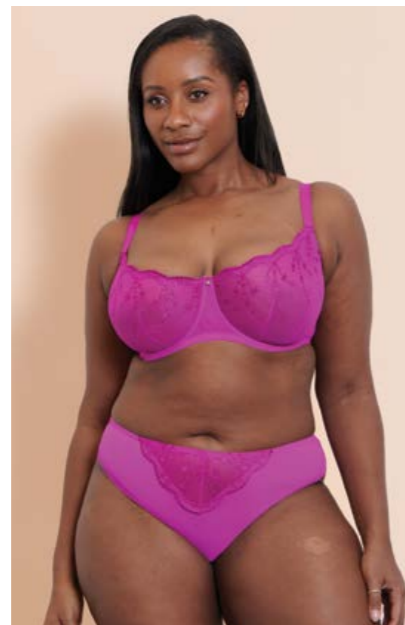
COLOURS

● Blush Pink - Continuity* from October 2025 **NEW**

● Black - Continuity* from August 2025 **NEW**

STARDUST

D-J cups



Stardust features sparkly star embroidery and a charming star detail at the centre, blending elegance and playfulness for a supported, celestial-inspired look.

KEY FEATURES

- Non-padded underwired balcony bra shape with darted cups for ultimate uplift.
- Delicate sparkly star embroidery.
- Star charm detail at centre front.
- Matching brazilian with star embroidery front panel.

STYLES

CK083100- Balcony Bra

	D	DD	E	F	FF	G	GG	H	HH	J
30				•	•	•	•	•	•	•
32				•	•	•	•	•	•	•
34	•	•		•	•	•	•	•	•	•
36	•	•	•	•	•	•	•	•	•	•
38	•	•	•	•	•	•	•	•	•	•
40	•	•	•	•	•	•	•	•	•	•

CK083202 - Brazilian Brief

	S	M	L	XL
•	•	•	•	•

COLOURS

- Vivid Violet - Available from July 2025 **NEW**

ALL NIGHT LACE

D-K cups



Unveil your natural curves with All Night Lace, our gorgeous lacey plunge body and balcony bra with matching tanga brief.

KEY FEATURES

- Non-padded underwired plunge body & scooped balcony bra.
- Powermesh-lined cups for support, shape and comfort.
- All over stretch lace.
- Flattering body seaming to enhance the natural curves.
- Matching tanga brief with ruched centre back.
- Bodysuit has a gusset fastening for ease of use.

STYLES

CK090704 - Plunge Body

	D	DD	E	F	FF	G	GG	H	HH	J	JJ	K
32												
34	•	•	•	•	•	•	•	•	•	•	•	•
36	•	•	•	•	•	•	•	•	•	•	•	•
38	•	•	•	•	•	•	•	•	•	•	•	•
40	•	•	•	•	•	•	•	•	•	•	•	•

CK090114 - Scooped Balcony Bra

	D	DD	E	F	FF	G	GG	H	HH	J	JJ	K
30												
32												
34	•	•		•	•	•	•	•	•	•	•	•
36	•	•	•	•	•	•	•	•	•	•	•	•
38	•	•	•	•	•	•	•	•	•	•	•	•
40	•	•	•	•	•	•	•	•	•	•	•	•

CK090211 - Tanga

	S	M	L	XL
•	•	•	•	•

COLOURS

- Denim Blue - Available from October 2025 **NEW**

LUSH

DD-K cups



Achieve support and style with this underwired plunge bra. Rigid cups lift up to a K cup, high-shine fabric smooths, and stretch wings ensure a secure fit.

KEY FEATURES

- Non-padded underwired full cup plunge bra.
- Inner rigid cups offering support up to a K cup.
- High shine super smooth cups.
- Deep stretch simplex wing.
- Featuring gold branded hardware.

STYLES

CK073101 - Full Plunge Bra

	DD	E	F	FF	G	GG	H	HH	J	JJ	K
32											
34											
36			•	•	•	•	•	•	•	•	•
38			•	•	•	•	•	•	•	•	•
40			•	•	•	•	•	•	•	•	•
42	•	•	•	•	•	•	•	•	•	•	•
44	•	•	•	•	•	•	•	•	•	•	•
46	•	•	•	•	•	•	•	•	•	•	•

CK073200 - Thong

	S	M	L	XL	2XL
•	•	•	•	•	•

COLOURS

- Oxblood - Available from September 2025 **NEW**

LIGHTSTYLE

D-K cups



Lightstyle is our new sheer plunge bra, designed with lightweight mesh for sophistication and support up to a K cup.

KEY FEATURES

- Super light & sheer plunge.
- Lightweight mesh is sheer and supportive up to a K cup.
- Stretch elastic along neckline offers flexible fit.
- Fully adjustable straps.
- Matching sheer brazilian.

STYLES

CK098101 - Plunge Bra

	D	DD	E	F	FF	G	GG	H	HH	J	JJ	K
30												
32												
34	•	•	•	•	•	•	•	•	•	•	•	•
36	•	•	•	•	•	•	•	•	•	•	•	•
38	•	•	•	•	•	•	•	•	•	•	•	•
40	•	•	•	•	•	•	•	•	•	•	•	•

CK098202 - Brazilian Brief

	S	M	L	XL
•	•	•	•	•

COLOURS

- Soft Sage - Available from November 2025 **NEW**
- Black - Continuity* from September 2025 **NEW**

CONTINUITY



SMOOTHIE SPACER D-J cups



Redefine comfort with this spacer-moulded plunge bra. Lightweight, breathable cups offer a second skin feel, while seam-free wings ensure no VBL.

KEY FEATURES

- Underwired spacer moulded plunge bra shape.
- Lightweight spacer cup is smooth & light.
- Flexible cup fit.
- Bonded seam free wings for smoothing back (no VBL).
- Racer back option with J-hook.

STYLES

CK072104 - Spacer Moulded T-Shirt Bra

	D	DD	E	F	FF	G	GG	H	HH	J
30										
32										
34										
36										
38										
40										
42										
44										
46										

COLOURS

- Purple - Available from October 2025 **NEW**
- Black - Continuity*

● Latte - Continuity*

LOVELACE D-K cups



Experience elegance with Lovelace. Stretch lace and smoothing wings offer superior comfort, support and a round uplifted shape for all day confidence.

KEY FEATURES

- Non-padded underwired side support balcony bra shape.
- Graphic floral and smooth touch stretch lace top cup.
- Smoothing wrap round wing.
- Built-up lace apex panel.
- Round and uplifted shape for all day wear.
- Matching lacey brazilian brief.

STYLES

CK089120 - Side Support Balcony Bra

	D	DD	E	F	FF	G	GG	H	HH	J	JJ	K
30												
32												
34												
36												
38												
40												
42												
44												

CK089202 - Brazilian Brief

	S	M	L	XL	2XL
30					
32					
34					
36					
38					
40					
42					
44					

COLOURS

- Deep Purple - Available from November 2025 **NEW**
- Black/Taupe - Continuity*

● Latte - Continuity*

LIGHTSTYLE D-K cups



NEW CONTINUITY

Lightstyle is our new sheer plunge bra, designed with lightweight mesh for sophistication and support up to a K cup.

KEY FEATURES

- Super light & sheer plunge.
- Lightweight mesh is sheer and supportive up to a K cup.
- Stretch elastic along neckline offers flexible fit.
- Fully adjustable straps.
- Matching sheer brazilian.

STYLES

CK098101 - Plunge Bra

	D	DD	E	F	FF	G	GG	H	HH	J	JJ	K
30												
32												
34												
36												
38												
40												

CK098202 - Brazilian Brief

	S	M	L	XL

COLOURS

- Soft Sage - Available from November 2025 **NEW**
- Black - Continuity* from September 2025 **NEW**

ZEN DD-JJ cups



NEW CONTINUITY

Elevate everyday comfort with our dual cup-sized, stretch-fit bralette. Designed with a monowire illusion, buttery-soft fabric, and a ribbed underband, Zen offers gentle support and a modern, inclusive fit.

KEY FEATURES

- Non-padded, non-wired stretch fit bralette.
- Dual cup sized.
- Monowire illusion cradle with branded logo.
- Buttery-touch style incorporates double layer cups.
- Soft ribbed deep under band elastic for added support & comfort.
- Available with matching dual sized brazilian.

STYLES

CK093110 - Non Wired Bralette

	DD/E	F/FF	G/GG	H/HH	J/JJ
30					
32					
34					
36					
38					
40					

CK093202 - Brazilian Brief

	S/M	L/XL

COLOURS

- Blush Pink - Continuity* from October 2025 **NEW**
- Black - Continuity* from August 2025 **NEW**

SUPERHERO D-J cups



NEW CONTINUITY

The **ULTIMATE** solutions bra, supporting up to a J cup with over 100 ways to wear. This underwired superplunge bra offers padded foam cups, and innovative eyeletted fold over elastic for unlimited strapping configurations. Adjustable straps, a back strap, and low-back extender ensure a custom fit, providing ultimate support, comfort, and versatility for every occasion.

KEY FEATURES

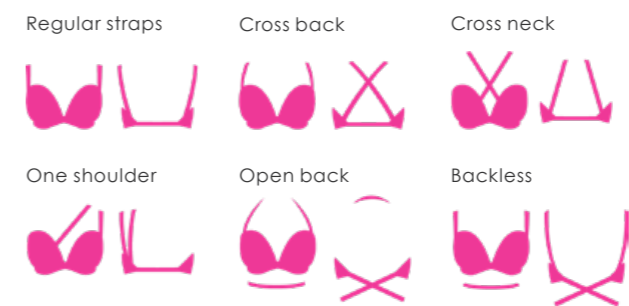
- Underwired padded superplunge multiway bra.
- Padded foam cups with smooth seaming under clothing.
- Superplunging wire for reduced coverage along neckline.
- Innovative eyeletted foldover elastic along the whole length of the bra, allows for unlimited strapping configurations.
- Full adjustable & detachable strapping, back strap & additional low back extender strapping.

STYLES

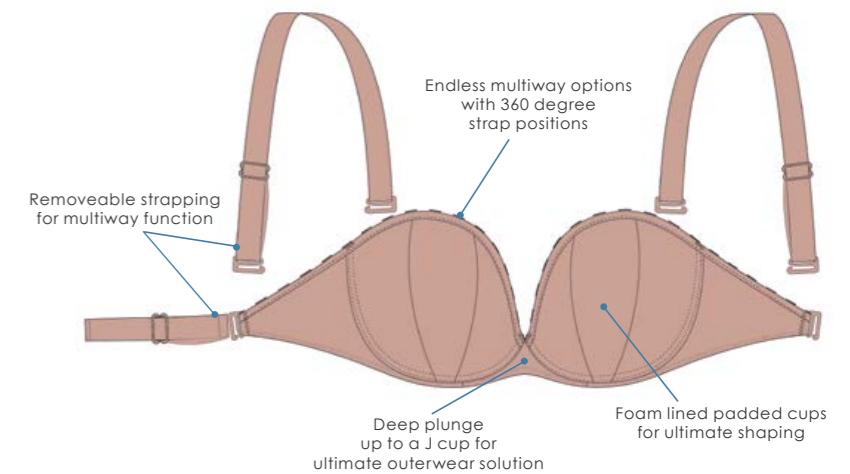
CK088108 - Multiway Padded Plunge Bra

	D	DD	E	F	FF	G	GG	H	HH	J
32										
34										
36										
38										
40										

WAYS TO WEAR



FEATURES & BENEFITS



COLOURS

- Black - Continuity* from July 2025 **NEW**
- Latte - Continuity*

LUXE D-K cups



Bestselling & award winning Luxe, our underwired padded strapless multiway bra, offers ultimate versatility and support. Multiway straps can be styled in multiple configurations to suit any outfit. With clean lines and a modern look, this bra combines fashion with function and seamed cups ensure you feel confident and comfortable all day.

KEY FEATURES

- Now available up to a K cup.
- Underwired padded strapless multiway bra.
- Multiway straps.
- Clean lines, modern look.
- Seamed cups for the best shape and support.

STYLES

CK2601 - Strapless Multiway Bra

	D	DD	E	F	FF	G	GG	H	HH	J	JJ*	K*
28"	•	•	•	•	•	•	•	•	•	•	•	•
30	•	•	•	•	•	•	•	•	•	•	•	•
32	•	•	•	•	•	•	•	•	•	•	•	•
34	•	•	•	•	•	•	•	•	•	•	•	•
36	•	•	•	•	•	•	•	•	•	•	•	•
38	•	•	•	•	•	•	•	•	•	•	•	•
40	•	•	•	•	•	•	•	•	•	•	•	•

* 28 backs not available in Caramel and Ivory

* JJ & K cups not available in Caramel

COLOURS

- Jet Black - Continuity
- Pearl Ivory - Continuity*
- Latte - Continuity
- Caramel - Continuity*

HEY GIRLS D-J cups



Our padded underwired superplunge strapless multiway bra offers daring cleavage and support up to a J cup.

KEY FEATURES

- Ultra low plunging cups for amazing shape and less coverage up to a J cup.
- Cushioned longline band adds comfort and support.
- Inner cup slings add shape and projection.
- Fully adjustable and detachable straps.
- Lace overlay.

STYLES

CK071108 - Superplunge Strapless Multiway Bra

	D	DD	E	F	FF	G	GG	H	HH	J
30	•	•	•	•	•	•	•	•	•	•
32	•	•	•	•	•	•	•	•	•	•
34	•	•	•	•	•	•	•	•	•	•
36	•	•	•	•	•	•	•	•	•	•
38	•	•	•	•	•	•	•	•	•	•
40	•	•	•	•	•	•	•	•	•	•

CK071212 - Thong

	S	M	L	XL
•	•	•	•	•

COLOURS

- Black/Latte - Continuity*
- Latte - Continuity*

SMOOTHIE STRAPLESS E-K cups



The Smoothie Strapless underwired moulded multiway bra offers support up to a K cup.

KEY FEATURES

- Gravity defying strapless up to a K cup.
- Smooth moulded cups for a rounded and uplifted shape.
- Inner sling for added support.
- Seam free, mesh-lined wings ensure the smoothest of looks.
- Concealed, soft plastic boning and silicone strips for slip-free comfort.
- Full adjustable and detachable straps and back extender.

STYLES

CK008109 - Moulded Strapless Multiway Bra

	E	F	FF	G	GG	H	HH	J	JJ	K
30	•	•	•	•	•	•	•	•	•	•
32	•	•	•	•	•	•	•	•	•	•
34	•	•	•	•	•	•	•	•	•	•
36	•	•	•	•	•	•	•	•	•	•
38	•	•	•	•	•	•	•	•	•	•
40	•	•	•	•	•	•	•	•	•	•
42	•	•	•	•	•	•	•	•	•	•
44	•	•	•	•	•	•	•	•	•	•

COLOURS

- Black - Continuity*
- Latte - Continuity*

WONDERFULLY DD-K cups



Discover style and comfort with our bestselling underwired balcony bra. Wonderfully ensures superior fit, support, and all-day confidence.

KEY FEATURES

- Bestselling shape, trusted for its superior fit and comfort.
- Non-padded underwired 4-part cup balcony bra shape.
- Curved underband to reduce roll and discomfort.
- Wide, firm wing mesh smooths and supports.
- Stretch top cup to balance the bust.
- Match with full coverage short with mesh panelling.

STYLES

CK061102 - Full Cup Side Support Balcony Bra

	DD	E	F	FF	G	GG	H	HH	J	JJ	K
32					•	•	•	•	•	•	•
34					•	•	•	•	•	•	•
36			•	•	•	•	•	•	•	•	•
38			•	•	•	•	•	•	•	•	•
40			•	•	•	•	•	•	•	•	•
42	•	•	•	•	•	•	•	•	•	•	•
44	•	•	•	•	•	•	•	•	•	•	•
46	•	•	•	•	•	•	•	•	•	•	•

COLOURS

- Deep Orchid - Available from July 2025 **NEW**
- Black - Continuity

CK061201 - Short

	10	12	14	16	18	20	22	24
•	•	•	•	•	•	•	•	•

- Latte - Continuity
- White - Continuity*

VICTORY D-J cups



Our award-winning Victory semi-sheer balcony bra combines lightweight minimalist design with impeccable support.

KEY FEATURES

- Non-padded underwired 4-part cup balcony bra shape.
- Tried and tested exceptional fit.
- Side support panels for forward shaping.
- Double layered mesh lower cup for increased support and fully adjustable straps.
- Silver 'V' charm detail and cut-out centre front.
- Matching semi-sheer short with high waist.

STYLES

CK9001 - Side Support Balcony Bra

	D	DD	E	F	FF	G	GG	H	HH	J
30				•	•	•	•	•	•	•
32				•	•	•	•	•	•	•
34	•	•	•	•	•	•	•	•	•	•
36	•	•	•	•	•	•	•	•	•	•
38	•	•	•	•	•	•	•	•	•	•
40	•	•	•	•	•	•	•	•	•	•
42	•	•	•	•	•	•	•	•	•	•
44	•	•	•	•	•	•	•	•	•	•

COLOURS

- Forest Green - Available from October 2025 **NEW**
- Black - Continuity
- Latte - Continuity
- White - Continuity*

CK9003 - Short

	8	10	12	14	16	18	20	22
•	•	•	•	•	•	•	•	•

DAZE T-SHIRT D-K cups



Our padded underwired balcony bra combines comfort and elegance, with microfibre cups, lace details, and smooth seams for a seamless look.

KEY FEATURES

- Padded underwired balcony bra shape.
- 3-part balcony bra for great everyday shape.
- Microfibre cups.
- Smooth cup seams for less show through.
- Finished with silver hardware.

STYLES

CK044106 - Padded T-Shirt Balcony Bra

	D	DD	E	F	FF	G	GG	H	HH	J	JJ	K
30						•	•	•	•	•	•	•
32						•	•	•	•	•	•	•
34	•	•	•	•	•	•	•	•	•	•	•	•
36	•	•	•	•	•	•	•	•	•	•	•	•
38	•	•	•	•	•	•	•	•	•	•	•	•
40	•	•	•	•	•	•	•	•	•	•	•	•
42	•	•	•	•	•	•	•	•	•	•	•	•
44	•	•	•	•	•	•	•	•	•	•	•	•

COLOURS

- Black - Continuity*

BOOST ME UP D-J cups



Our go-to-bra for a great rounded shape, lift and boob boosting properties! A great choice for those looking to achieve fullness in the top cup of the bust.

KEY FEATURES

- Padded underwired half cup balcony bra shape with sweetheart neckline.
- Cakes on a plate effect for Bridgerton-esque cleavage.
- Silver hardware detail.

STYLES

CK027106 - Padded Balcony Bra

	D	DD	E	F	FF	G	GG	H	HH	J
30						•	•	•	•	•
32						•	•	•	•	•
34	•	•	•	•	•	•	•	•	•	•
36	•	•	•	•	•	•	•	•	•	•
38	•	•	•	•	•	•	•	•	•	•
40	•	•	•	•	•	•	•	•	•	•
42	•	•	•	•	•	•	•	•	•	•
44	•	•	•	•	•	•	•	•	•	•

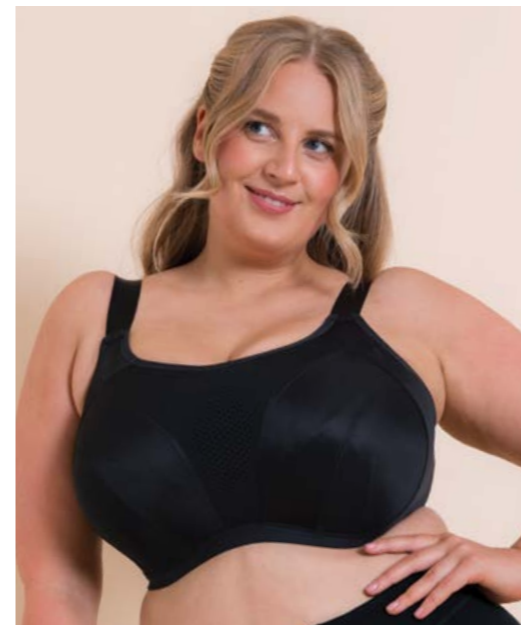
COLOURS

- Black - Continuity
- Latte - Continuity



SPORT

EVERYMOVE F-K cups



Everymove is Curvy Kate's high impact sports bra which offers dynamic support whatever the activity. Through extensive market research, we identified the key product features for a sports bra to offer encapsulation, maximum adjustability and reassurance during exercise, plus the added benefit of staying fresher for longer with **Micro-Fresh®** antimicrobial technology.

KEY FEATURES

- Underwired non-padded sports bra.
- **Micro-Fresh®** keeps product fresher for longer with antimicrobial technology.
- Triple layer fit – inner cup, secret layer and outer layer to reduce breast movement and bounce.
- 4-part inner cup encapsulation.
- Flexi-wire moves with you inside hidden wire-casing.

- Fully adjustable 3cm wide high-modulus straps, grip sliders to hold position and innovative racer back J-hook.
- Cushioned 4-row back fastening to added comfort and reduced friction with printed label.
- All edges finished with soft foldover elastic for comfort during exercise.

STYLES

CK043113 - Wired Multiway Sports Bra

	F	FF	G	GG	H	HH	J	JJ	K
30	●	●	●	●	●	●	●	●	●
32	●	●	●	●	●	●	●	●	●
34	●	●	●	●	●	●	●	●	●
36	●	●	●	●	●	●	●	●	●
38	●	●	●	●	●	●	●	●	●
40	●	●	●	●	●	●	●	●	●
42	●	●	●	●	●	●	●	●	●

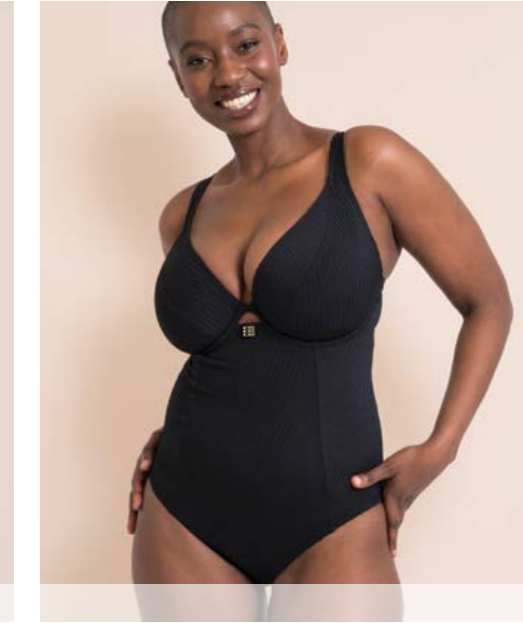
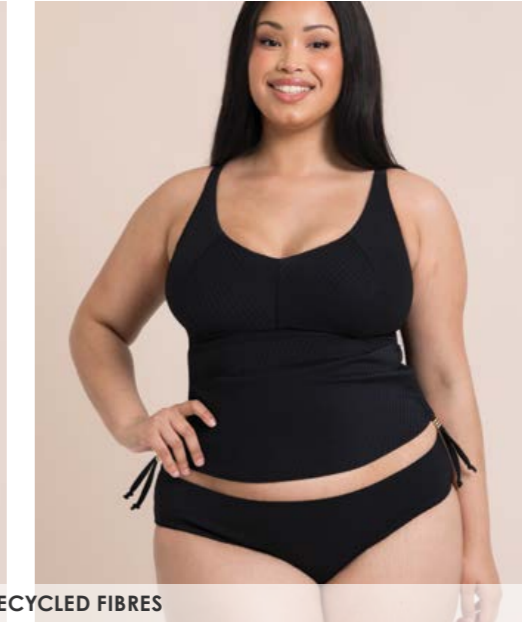
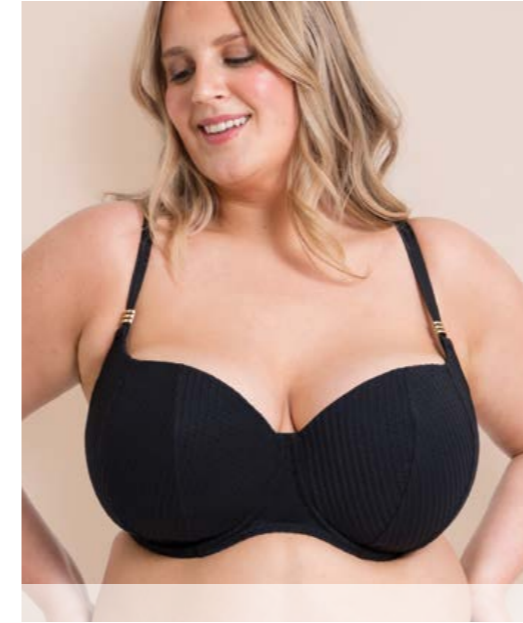
COLOURS

- Blush/Charcoal - Continuity* from December 2025 **NEW**
- Black - Continuity*
- Jungle Green/Black - Continuity*

SWIMWEAR



JET SET D-K cups



INCLUDES RECYCLED FIBRES

Jet Set is our new swimwear collection, crafted from textured, twisted rib fabric with recycled fibres. The plunge swimsuit offers support up to a K cup with multiway straps. The non-wired tankini ensures easy wear and soft stretch comfort. The Padded Balcony, inspired by our Boost Me Up style, adds neckline coverage for enhanced support while swimming.

KEY FEATURES

- Non-wired, non-padded tankini with side ties to adjust and dual cup sized.
- Non-padded swimsuit with 3-way multiway straps, centre gold detailing.
- **NEW** deeper branded swim clasp for top sizes.
- Matching high waist and classic bikini briefs.

STYLES

CS034605 - Multiway Plunge Swimsuit

	D	DD	E	F	FF	G	GG	H	HH	J	JJ	K
30												
32												
34	•											
36	•											
38	•											
40	•											
42	•											
44	•											

CS034300 - Padded Balcony Bikini Top

	D	DD	E	F	FF	G	GG	H	HH	J
30										
32										
34	•									
36	•									
38	•									
40	•									
42	•									
44	•									

CS034408 - Non-Wired Multiway Tankini Top

	DD/E	F/FF	G/GG	H/HH	J/JJ
30					
32	•	•	•	•	•
34	•	•	•	•	•
36	•	•	•	•	•
38	•	•	•	•	•
40	•	•	•	•	•

CS034505 - High Waist Bikini Brief

	S	M	L	XL	2XL
30					
32	•	•	•	•	•
34	•	•	•	•	•
36	•	•	•	•	•
38	•	•	•	•	•
40	•	•	•	•	•

CS034500 - Classic Bikini Brief

COLOURS

- Black - Continuity*

DEEP DIVE DD-KK cups



INCLUDES RECYCLED FIBRES

Dive into comfort with this non-wired, non-padded swimsuit. Featuring inner mesh panels, seamed cups, and a deep underband, it offers reliable support, a flattering shape, and a secure fit with dual cup sizing.

KEY FEATURES

- Non-wired, non-padded swimsuit for recreational swimming, up to a KK cup.
- Internal single hook-and-eye front fastening.
- Seamed cup mesh liner for great shape and support.
- Dual cup sized.
- Chlorine resistant and fast drying fabric.

STYLES

CS028606 - Swimsuit

	DD/E	F/FF	G/GG	H/HH	J/JJ	K/KK
30	●	●	●	●	●	●
32	●	●	●	●	●	●
34	●	●	●	●	●	●
36	●	●	●	●	●	●
38	●	●	●	●	●	●
40	●	●	●	●	●	●

COLOURS

- Black - Continuity*

ZIP TIDE S-2XL cups



INCLUDES RECYCLED FIBRES

Discover the swimwear version of our bestselling Indulgence body. This non-wired swimsuit offers exceptional shape, comfort, and support, with a zipper front, quick-dry fabric, and deeper swim clasp for added support.

KEY FEATURES

- Same shape, fit & support as our bestselling body, **Indulgence**.
- Fully lined non-wired swimsuit.
- Secure zipper front with swan hook fastening.
- Quick-dry swimwear fabric.
- **NEW** deeper branded swim clasp for top sizes.

STYLES

CS035606 - Non Wired Swimsuit

	S	M	L	XL	2XL
●	●	●	●	●	●

COLOURS

- Black - Continuity*

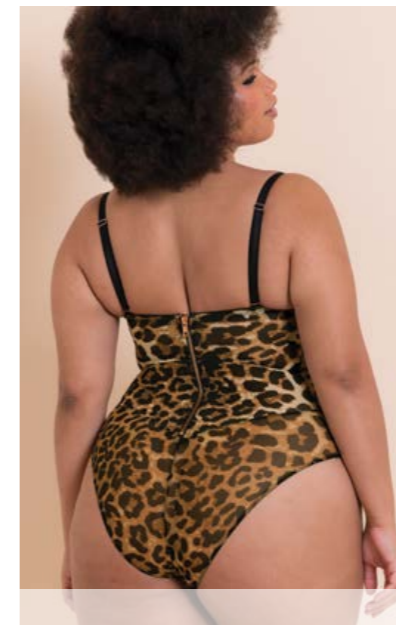


SCANTILLY[®]

by Curvy Kate



ICON DD-J cups



WORN TO BE SEEN

Unleash your wild side with our underwired Superplunge Padded Bodysuit. Crafted from striking leopard-printed fabric, this bodysuit is as bold as it is beautiful.

KEY FEATURES

- Ultra-low, underwired superplunge padded bodysuit.
- Underwired foam lined cups.
- Rose gold zipped back fastening with concealed swan hook.
- Hook and eye gusset fastening.
- Fully adjustable, detachable straps.
- Leopard printed fabric.

STYLES

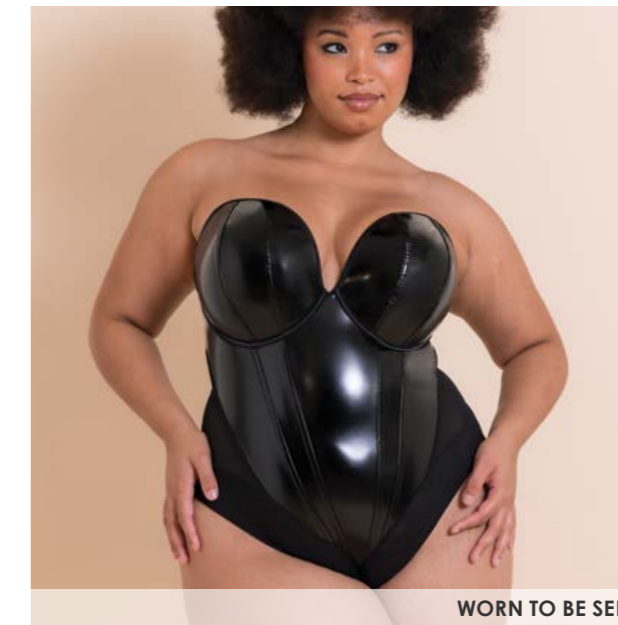
ST031704 - Plunge Strapless Padded Body

	DD	E	F	FF	G	GG	H	HH	J
30	●	●	●	●	●	●	●	●	●
32	●	●	●	●	●	●	●	●	●
34	●	●	●	●	●	●	●	●	●
36	●	●	●	●	●	●	●	●	●
38	●	●	●	●	●	●	●	●	●

COLOURS

- Leopard Print - Available from August 2025 **NEW**

CLASSIQUE DD-J cups



WORN TO BE SEEN

Turn up the heat with the ultra-low, underwired Superplunge Padded Bodysuit in high shine pleather. This bodysuit is the ultimate statement piece for daring, confident looks.

KEY FEATURES

- Ultra-low, underwired superplunge padded bodysuit.
- Underwired foam lined cups.
- Rose gold zipped back fastening with concealed swan hook.
- Hook-and-eye gusset fastening.
- Fully adjustable, detachable straps.
- High-shine pleather.

STYLES

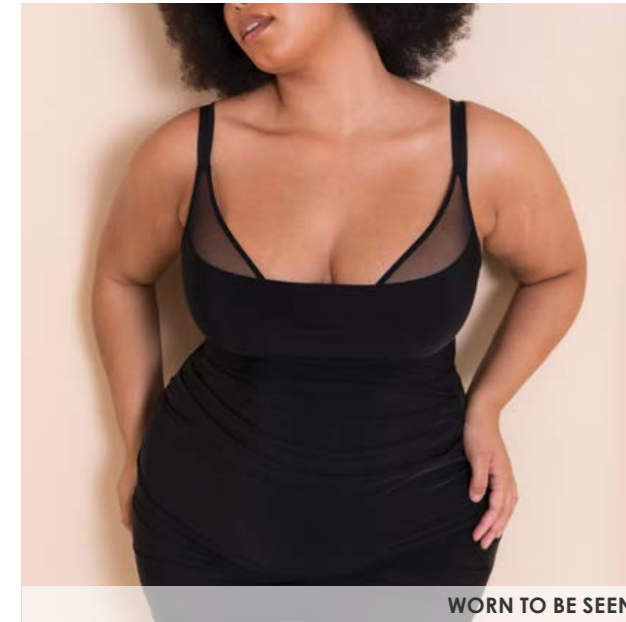
ST035704 - Plunge Strapless Padded Body

	DD	E	F	FF	G	GG	H	HH	J
30	●	●	●	●	●	●	●	●	●
32	●	●	●	●	●	●	●	●	●
34	●	●	●	●	●	●	●	●	●
36	●	●	●	●	●	●	●	●	●
38	●	●	●	●	●	●	●	●	●

COLOURS

- Black - Available from October 2025 **NEW**

MIRAGE DD-J cups



WORN TO BE SEEN

Step into elegance with this full-stretch slip dress, featuring a built-in bra for support and shape. This dress offers a seamless finish, perfect for any occasion.

KEY FEATURES

- Internal deep plunge bra offers support, lift & shape (based on **Peep Show**).
- Pleated side seam offers flattering effect around body.
- Supersoft microfibre designed to offer a glamorous, one-piece outerwear solution.
- Inner lining to ensure no show through.
- Concealed centre-back zip fastening.
- Dress will sit just below knee.
- Fully adjustable straps and rose gold details.

STYLES

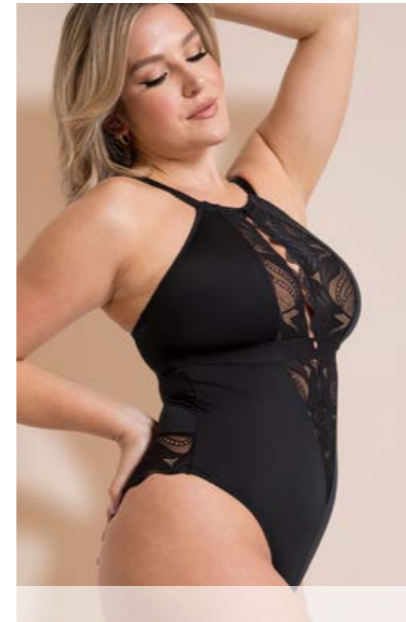
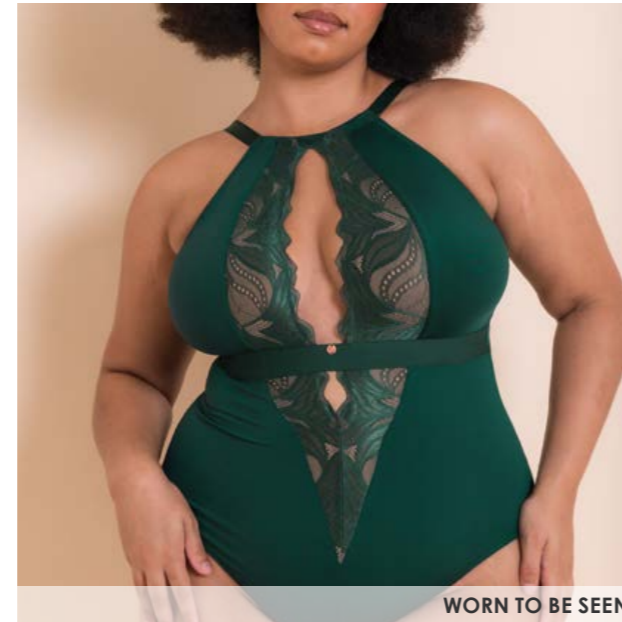
ST047329 - Wired Plunge Slip Dress

	DD	E	F	FF	G	GG	H	HH	J
30	●	●	●	●	●	●	●	●	●
32	●	●	●	●	●	●	●	●	●
34	●	●	●	●	●	●	●	●	●
36	●	●	●	●	●	●	●	●	●
38	●	●	●	●	●	●	●	●	●
40	●	●	●	●	●	●	●	●	●

COLOURS

- Black - Continuity* from September 2025 **NEW**

INDULGENCE S-3XL cups



WORN TO BE SEEN

Indulge in timeless elegance with our bestselling non-wired bodysuit, adorned with exquisite magnolia flower lace detailing. Designed for comfort and style, this bodysuit offers a soft yet supportive feel, perfect for all-day wear.

KEY FEATURES

- Non-wired bodysuit with magnolia flower lace detail.
- Mesh lined cups and gusset fastening.
- Microfibre full stretch body.
- Signature Scantilly rose gold hardware.
- Fully adjustable straps.

STYLES

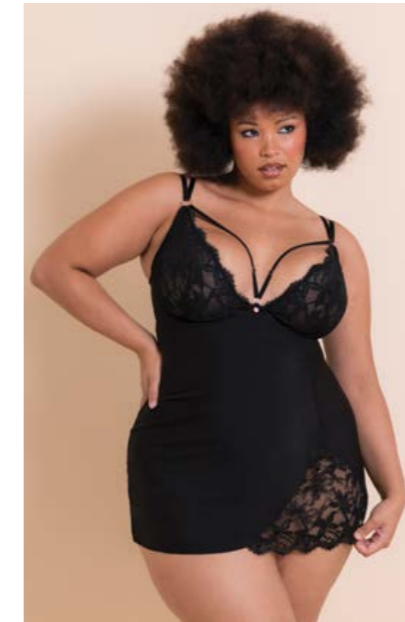
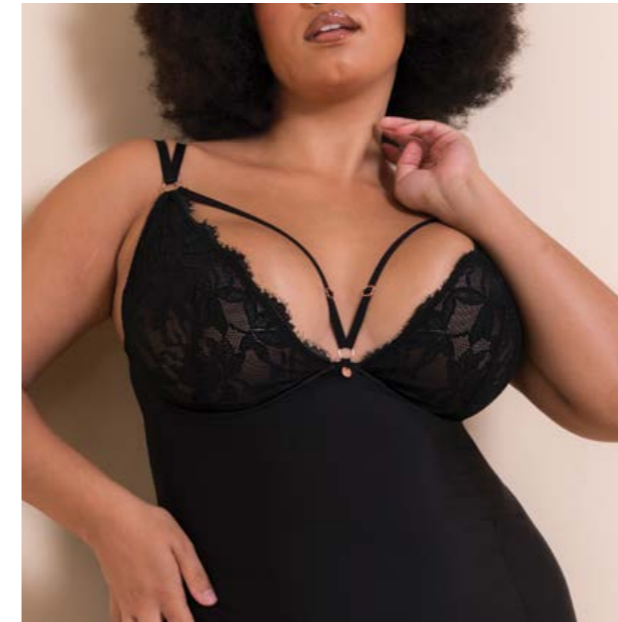
ST010704 - Stretch Lace Body

	S	M	L	XL	2XL	3XL
●	●	●	●	●	●	●

COLOURS

- Emerald - Available from July 2025 **NEW**
- Black - Continuity*

EMBRACE CHEMISE DD-J cups



Indulge in playful sophistication with our Embrace wired plunge Chemise. Elegant lace details combined with buttery soft microfibre make this the ultimate seductive nightwear piece.

KEY FEATURES

- Cute, flared microfibre chemise with wired bra (based on **Embrace Bra**).
- Stretch lace cups for flexible fit.
- Delicate strapping detail.
- Fully adjustable straps.
- Rose gold hardware.

STYLES

ST048320 - Wired Plunge Chemise

	DD	E	F	FF	G	GG	H	HH	J
30	●	●	●	●	●	●	●	●	●
32	●	●	●	●	●	●	●	●	●
34	●	●	●	●	●	●	●	●	●
36	●	●	●	●	●	●	●	●	●
38	●	●	●	●	●	●	●	●	●
40	●	●	●	●	●	●	●	●	●

COLOURS

- Black - Continuity* from October 2025 **NEW**

EMBRACE TEDDY S-2XL cups



The playful and seductive Embrace Teddy exudes glamour and allure. Featuring a flirty french-knicker inspired brief shape and a stretch microfibre body with lace details.

KEY FEATURES

- Stretch Teddy with lace detail non-wire cups.
- Slinky microfibre for a luxe feel.
- Non-wired, non-padded cups.
- Fully adjustable straps.
- Rose gold hardware.

STYLES

ST048327 - Stretch Lace Teddy

	S	M	L	XL	2XL
●	●	●	●	●	●

COLOURS

- Black - Continuity* from October 2025 **NEW**

HARNESSED DD-HH cups



WORN TO BE SEEN

Back by popular demand, this Scantilly bestseller features matte pleather-covered padded cups for uplift and a rounded shape. Wide strapping and removable satin straps offer versatile styling for a daring yet comfortable fit.

KEY FEATURES

- Amazing uplift & rounded shape.
- Wide strapping detail.
- Removeable satin strapping for versatility.
- Fully adjustable straps.
- Rose gold hardware.
- Matching deep thong.

STYLES

ST008105 - Half Cup Padded Bra

	DD	E	F	FF	G	GG	H	HH
30	•	•	•	•	•	•	•	•
32	•	•	•	•	•	•	•	•
34	•	•	•	•	•	•	•	•
36	•	•	•	•	•	•	•	•
38	•	•	•	•	•	•	•	•

ST008207 - Deep Thong

	S	M	L	XL
•	•	•	•	•

COLOURS

- Black - Continuity* from July 2025 **NEW**

EOS DD-J cups



Shine bright in this stunning foil-printed design that offers a dazzling effect for a touch of glamour. This range is a perfect blend of boldness and elegance.

KEY FEATURES

- Foil printed for dazzling effect.
- Vertical cup seams for lift & rounded shape.
- Delicate cut-out windows across bust.
- Fully adjustable straps.
- Rose gold sun flare metal charm.
- Matching thong.

STYLES

ST045100 - Balcony Bra

	DD	E	F	FF	G	GG	H	HH	J
30	•	•	•	•	•	•	•	•	•
32	•	•	•	•	•	•	•	•	•
34	•	•	•	•	•	•	•	•	•
36	•	•	•	•	•	•	•	•	•
38	•	•	•	•	•	•	•	•	•
40	•	•	•	•	•	•	•	•	•

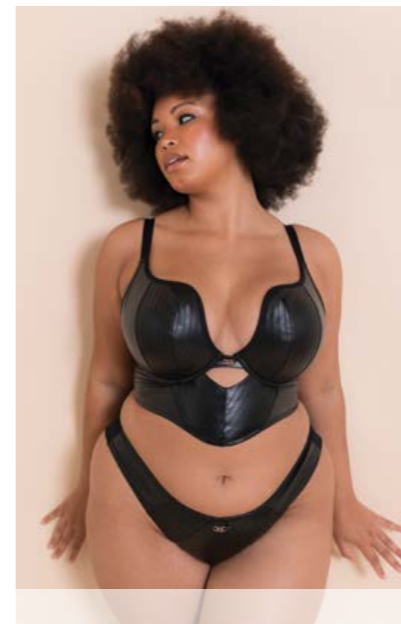
ST045200 - Thong

	S	M	L	XL	2XL
•	•	•	•	•	•

COLOURS

- Black Sparkle - Available from August 2025 **NEW**

HELL FOR PLEATHER DD-J cups



WORN TO BE SEEN

Unleash your inner diva with this superplunge longline bra, designed for maximum impact. The deep padded plunge creates dramatic cleavage, while topstitched pleather details add a touch of biker glamour.

KEY FEATURES

- Superplunge longline bra.
- Deep padded plunge offers maximum cleavage.
- Topstitched pleather nods to biker glamour.
- Rose gold chains adds to aesthetic.
- Stretch pleather & fully adjustable straps.
- Matching brazilian.

STYLES

ST049112 - Superplunge Longline Bra

	DD	E	F	FF	G	GG	H	HH	J
30	•	•	•	•	•	•	•	•	•
32	•	•	•	•	•	•	•	•	•
34	•	•	•	•	•	•	•	•	•
36	•	•	•	•	•	•	•	•	•
38	•	•	•	•	•	•	•	•	•
40	•	•	•	•	•	•	•	•	•

ST049202 - Brazilian Brief

	S	M	L	XL
•	•	•	•	•

COLOURS

- Black - Available from September 2025 **NEW**

LOVED UP DD-K cups



Perfect for Christmas and Valentine's Day. Experience the perfect blend of lift and shape with Loved up, a new take on our bestselling Scantilly balcony bra.

KEY FEATURES

- Vertical cup seamed balcony offers lift & rounded shape.
- Stretch outer cup panels offer an extra boost.
- Bespoke designed Scantilly heart charm centres the look.
- High shine soft elastics frame this style.
- Fully adjustable straps.
- Matching brazilian and suspender belt.

STYLES

ST051100 - Balcony Bra

	DD	E	F	FF	G	GG	H	HH	J	JJ	K
30	•	•	•	•	•	•	•	•	•	•	•
32	•	•	•	•	•	•	•	•	•	•	•
34	•	•	•	•	•	•	•	•	•	•	•
36	•	•	•	•	•	•	•	•	•	•	•
38	•	•	•	•	•	•	•	•	•	•	•
40	•	•	•	•	•	•	•	•	•	•	•
42	•	•	•	•	•	•	•	•	•	•	•
44	•	•	•	•	•	•	•	•	•	•	•

ST051200 - Brazilian Brief

	S	M	L	XL	2XL
•	•	•	•	•	•

ST051800 - Suspender Belt

	S	M	L	XL	2XL
•	•	•	•	•	•

COLOURS

- Crimson - Available from November 2025 **NEW**

SUSPENSE DD-K cups



WORN TO BE SEEN



WORN TO BE SEEN

Suspense is our vintage inspired statement range for Scantilly. With lightweight shimmering panelling applied to enhance the curves and to offer underwear as outerwear styling.

- KEY FEATURES**
- Non-padded underwired plunge bra.
 - Non-padded underwired plunge body with gusset fastening and g string back.
 - Sheer plunge with sheer panelling.
 - Bespoke branded suspender clip in rose gold adds a glamorous touch.
 - Fully adjustable straps.
 - Matching high waist brief.

STYLES

ST043101 - Plunge Bra

	DD	E	F	FF	G	GG	H	HH	J	JJ	K
30	•	•	•	•	•	•	•	•	•	•	•
32	•	•	•	•	•	•	•	•	•	•	•
34	•	•	•	•	•	•	•	•	•	•	•
36	•	•	•	•	•	•	•	•	•	•	•
38	•	•	•	•	•	•	•	•	•	•	•
40	•	•	•	•	•	•	•	•	•	•	•
42	•	•	•	•	•	•	•	•	•	•	•

ST043704 - Wired Plunge Body

	DD	E	F	FF	G	GG	H	HH	J	JJ	K
30	•	•	•	•	•	•	•	•	•	•	•
32	•	•	•	•	•	•	•	•	•	•	•
34	•	•	•	•	•	•	•	•	•	•	•
36	•	•	•	•	•	•	•	•	•	•	•
38	•	•	•	•	•	•	•	•	•	•	•
40	•	•	•	•	•	•	•	•	•	•	•
42	•	•	•	•	•	•	•	•	•	•	•

ST043208 - High Waist Brief

	S	M	L	XL	2XL
•	•	•	•	•	•

- COLOURS**
- French Blue - Available from August 2025 **NEW**
 - Black - Continuity*

GLAMOUR PUSS DD-J cups



Make a bold statement with this superplunge padded bra in a luxurious combination of velvet and eyelash lace. Our bra is the epitome of opulence and allure, perfect for those who want to turn heads.

- KEY FEATURES**
- Deep padded plunge offers maximum cleavage.
 - Velvet & eyelash lace combined for glamorous look.
 - Detachable lacey sleeves.
 - Fully adjustable straps.
 - Rose gold detail.
 - Matching thong.

STYLES

ST050107 - Superplunge Bra

	DD	E	F	FF	G	GG	H	HH	J
30	•	•	•	•	•	•	•	•	•
32	•	•	•	•	•	•	•	•	•
34	•	•	•	•	•	•	•	•	•
36	•	•	•	•	•	•	•	•	•
38	•	•	•	•	•	•	•	•	•
40	•	•	•	•	•	•	•	•	•

ST050200 - Thong

	S	M	L	XL
•	•	•	•	•

- COLOURS**
- Midnight Navy - Available from October 2025 **NEW**

ENTWINED DD-J cups



A scattering of hand drawn embroidery tattoo style roses, with rose gold metallic chains on a blush net base. Finished off with a metal chain and bow detail at the centre front to complete this must-have set.

- KEY FEATURES**
- Non-padded underwired balcony bra, Scantilly's bestselling bra shape.
 - Hand-drawn metallic embroidery featuring tattoo style roses and rose gold metallic chains.
 - Vertical cup seams lift & offer rounded shape.
 - Fully adjustable straps.
 - Branded rose gold charm with chain embellishment.
 - Matching tanga brief.

STYLES

ST046100 - Balcony Bra

















	DD	E	F	FF	G	GG	H	HH	J
30	•	•	•	•	•	•	•	•	•
32	•	•	•	•	•	•	•	•	•
34	•	•	•	•	•	•	•	•	•
36	•	•	•	•	•	•	•	•	•
38	•	•	•	•	•	•	•	•	•
40	•	•	•	•	•	•	•	•	•

ST046211 - Tanga

	S	M	L	XL	2XL
•	•	•	•	•	•

- COLOURS**
- Deep Teal - Available from September 2025 **NEW**
 - Black/Blush - Continuity*

CONTINUITY STYLES

STRAPLESS	T-SHIRT	PLUNGE	FULL CUP	BALCONY	SPORT	WIRELESS	SWIMWEAR
 <p>HEY GIRLS ● Latte* ● Black*</p>	 <p>DAZE T-SHIRT ● Black*</p>	 <p>SUPERHERO ● Latte* ● Black*</p>	 <p>WONDERFULLY ● Latte ● Black ● White* ● Deep Orchid**</p>	 <p>LOVELACE ● Latte* ● Black/Taupe* ● Deep Purple**</p>	 <p>EVERYMOVE ● Black* ● Jungle Green/Black* ● Blush/Charcoal*</p>	 <p>ZEN ● Black* ● Blush Pink*</p>	 <p>ZIP TIDE ● Black*</p>
 <p>SMOOTHIE STRAPLESS ● Latte* ● Black*</p>	 <p>SMOOTHIE SPACER T-SHIRT ● Latte* ● Black* ● Purple**</p>	 <p>LIGHTSTYLE ● Black* ● Soft Sage**</p>	 <p>VICTORY ● Latte ● Black ● White* ● Forest Green**</p>	 <p>BOOST ● Latte ● Black ● Diamante**</p>	 <p>DEEP DIVE ● Black*</p>	 <p>JET SET (All Styles) ● Black*</p>	
 <p>LUXE ● Latte ● Jet Black ● Pearl Ivory* ● Caramel*</p>							

SCANTILLY	
 <p>INDULGENCE ● Black* ● Emerald**</p>	 <p>EMBRACE ● Black*</p>
 <p>SUSPENSE ● Black* ● French Blue**</p>	 <p>EMBRACE ● Black*</p>
 <p>SUSPENSE ● Black* ● French Blue**</p>	 <p>MIRAGE ● Black*</p>
 <p>HARNESSED ● Black*</p>	 <p>ENTWINED ● Black/Blush*</p>

SIZE CHARTS

INTERNATIONAL CONVERSION SIZES BRA CUPS				
UK	US	EU	FR	AU
D	D	D	D	D
DD	DD/E	E	E	DD
E	DDD/F	F	F	E
F	G	G	G	F
FF	H	H	H	FF
G	I	I	I	G
GG	J	J	J	GG
H	K	K	K	H
HH	L	L	L	HH
J	M	M	M	J
JJ	N	N	N	JJ
K	O	O	O	K

INTERNATIONAL CONVERSION SIZES BRA BACKS				
UK	US	EU	FR	AU
28	28	60	75	6
30	30	65	80	8
32	32	70	85	10
34	34	75	90	12
36	36	80	95	14
38	38	85	100	16
40	40	90	105	18
42	42	95	110	20
44	44	100	115	22
46	46	105	120	24

INTERNATIONAL CONVERSION SIZES CURVY KATE BRIEFS				
UK	US	EU	FR	AU
8 (S)	4(XS)	34	36	8
10 (S)	6(S)	36	38	10
12 (M)	8(M)	38	40	12
14 (M)	10(L)	40	42	14
16 (L)	12(XL)	42	44	16
18 (L)	14(2XL)	44	46	18
20 (XL)	16(3XL)	46	48	20
22 (XL)	18(4XL)	48	50	22
24(2XL)	20(5XL)	50	52	24

INTERNATIONAL CONVERSION SIZES SCANTILLY BRIEFS						
	UK	US	EU	FR	AU	IT
S	8-10	4-6	34-36	36-38	8-10	36-38
M	12-14	8-10	38-40	40-42	12-14	40-42
L	16-18	12-14	42-44	44-46	16-18	44-46
XL	20-22	16-18	46-48	48-50	20-22	48-50
2XL	24-26	20-22	50-52	52-54	24-26	52-54
3XL	28-30	24-26	54-56	56-58	28-30	56-58

SCANTILLY SIZE GUIDE FOR NON-WIRED TOPS										
	DD	E	F	FF	G	GG	H	HH	J	JJ
30	S	S	S	S	M	M	L	L	L	L
32	S	S	S	M	M	M	L	L	L	L
34	S	S	M	M	M	L	L	L	L	XL
36	M	M	M	L	L	L	XL	XL	XL	XL
38	M	L	L	L	XL	XL	XL	XL	XL	XL
40	L	L	XL	XL	XL	2XL	2XL	2XL	2XL	2XL
42	XL	XL	XL	2XL	2XL	2XL	2XL	2XL	2XL	2XL
44	XL	XL	2XL	2XL	2XL	2XL	2XL	2XL	2XL	3XL
46	2XL	2XL	2XL	2XL	2XL	2XL	3XL	3XL	3XL	3XL
48	2XL	2XL	3XL	3XL	3XL	3XL	3XL	3XL	3XL	3XL
50	3XL	3XL	3XL	3XL	3XL	3XL	3XL	3XL	3XL	3XL

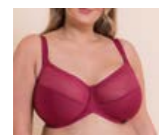
Use this chart for Indulgence & Embrace

Curvy Kate operates two types of continuity products:

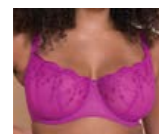
- Continuity - Our aim is that these products will never be out of stock in the season.
- Continuity* - These products are available throughout the season, but we may experience size shortages until stock is replenished.
- ** - New Fashion Colours AW25.

DELIVERY DATES

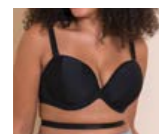
JULY



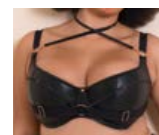
WONDERFULLY
● Deep Orchid



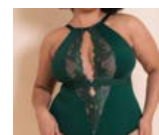
STARDUST
● Vivid Violet



SUPERHERO
● Black

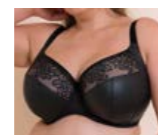


HARNESSED
● Black

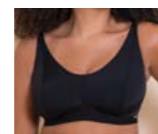


INDULGENCE
● Emerald

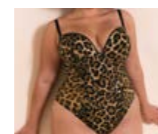
AUGUST



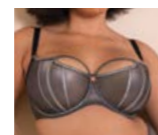
ENCHANT
● Black



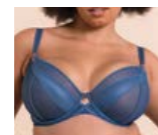
ZEN
● Black



ICON
● Leopard Print

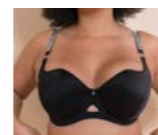


EOS
● Black Sparkle

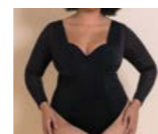


SUSPENSE
● French Blue

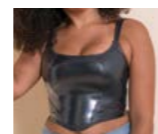
SEPTEMBER



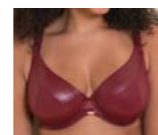
BOOST DIAMANTE
● Black



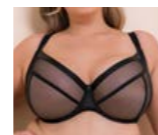
BOOST BODY
● Black



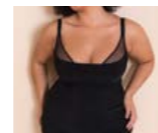
HYPE
● Gunmetal



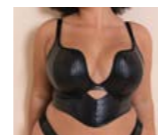
LUSH
● Oxblood



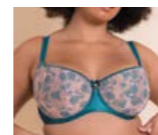
LIGHTSTYLE
● Black



MIRAGE
● Black

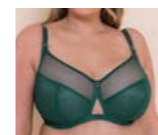


HELL FOR PLEATHER
● Black

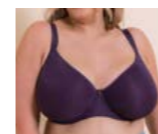


ENTWINED
● Deep Teal

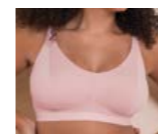
OCTOBER



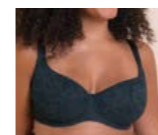
VICTORY
● Forest Green



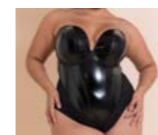
SMOOTHIE SPACER T-SHIRT
● Purple



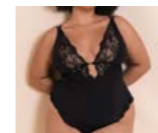
ZEN
● Blush Pink



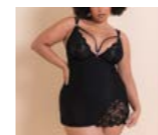
ALL NIGHT LACE
● Denim Blue



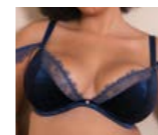
CLASSIQUE
● Black



EMBRACE
● Black

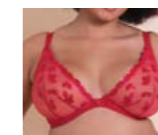


EMBRACE
● Black

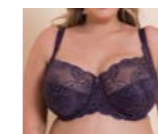


GLAMOUR PUSS
● Midnight Navy

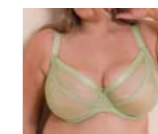
NOVEMBER



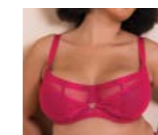
PUCKER UP
● Lipstick Red



LOVELACE
● Deep Purple

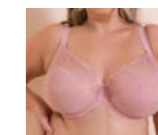


LIGHTSTYLE
● Soft Sage

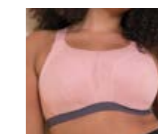


LOVED UP
● Crimson

DECEMBER



FLARE
● Rose Sparkle



EVERYMOVE
● Blush/Charcoal



Curvy Kate[®]

D-K cup

Curvy Kate Limited, 5th Floor, The Atrium,
1 Harefield Road, Uxbridge, UB8 1PH United Kingdom
Email: customersupport@curvykate.com
View the Curvy Kate range and place your orders via our B2B
WWW.CURVYKATEWHOLESALE.COM